

**ALT-213/02 – Alerta Partner** – an alternating pressure relieving cushion system with a 2" foam base for effective prevention and treatment of patients at high risk of developing a pressure ulcer in hospital, nursing and care home environments.

With simple to use settings and functionality, the **Alerta Partner** enables the care provider to quickly set up the cushion system and have it operating at optimal pressure for a specific user with ease.

The **Alerta Partner** is a highly versatile and cost effective solution which has been manufactured to comply with the most stringent quality and in-use guidelines.

## TECHNICAL SPECIFICATION

### Cushion Specification

- > Cushion Dimensions: 45 x 45 x 10 cm
- > Cushion Weight: 1.4kg
- > Cell Structure: Cell-on-cell-on-foam

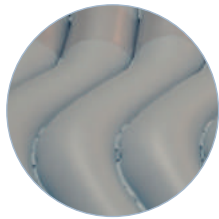
### Pump Specification

- > Pump Dimensions: 27 x 13 x 9 cm
- > Pump Weight: 1.6kg
- > Max Load: 150kg
- > Cycle Time: 12 minutes
- > Power Input: AC220-240V, 50-60Hz
- > Power Consumption: 7W
- > Pressure Range: 50-110 mmHg
- > Fitted with hanging brackets

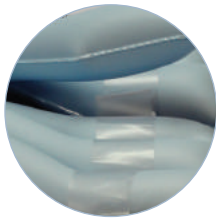
### Cover Specification

- > Multi-stretch PU
- > Vapour permeable
- > Water resistant
- > Machine washable
- > Antimicrobial
- > 360 degree zipper
- > White underside of cover

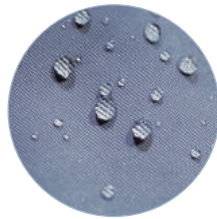
## KEY FEATURES AND BENEFITS



Nylon TPU  
coated cells



Independently  
removable cells



Multi-stretch, waterproof &  
vapour permeable PU cover



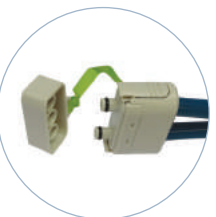
Antimicrobial,  
machine washable



360 Degree zipper



Robust pump  
connection

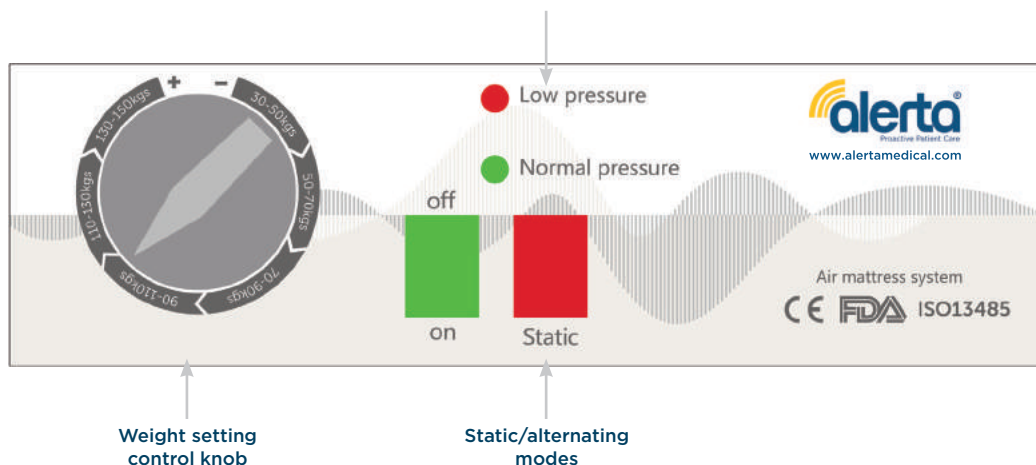


Transport mode

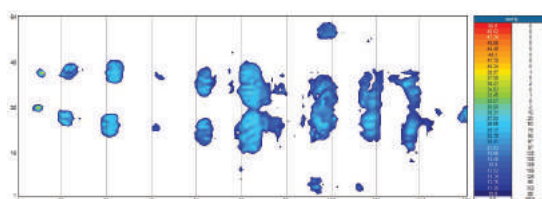


## CONTROL PANEL

Visual and audible warning of  
air loss and power failure



Scan to watch  
Alerta Medical



Clinical pressure mapping evaluation



See page 19  
for details